

Galveston

# East End Historical District Association NEIGHBORHOOD NEWS

## APRIL 2013

Vol. 40 No. 4 Jane Chance, Editor

## APRIL NEWS FLASH

### City to Reverse Direction of Area Streets

**City of Galveston recently announced plans to switch the direction of two one-way streets running through the East End Historical District.**

According to city spokesman Angelo Erbao, years of one-way traffic has caused the asphalt street surface on Church and Postoffice Streets to move “backwards” approximately  $\frac{1}{2}$ ” per year, causing drainage and sewer problems as well as potholes and rough spots. Reversing the direction will eventually shift the asphalt back into its correct position. “To accelerate the repairs, we hope to re-route many of the large trucks destined for the new Container Terminal down Church and Postoffice Streets, especially over the summer months when the road surface is softer and easier to shift.”

The entire project is expected to take five to ten years. In the meantime, residents are encouraged to be friendly and wave to tourists driving the ‘wrong way’ down these streets in recognition of the efforts they are making to put our asphalt back where it belongs.

### Tree Sculptures Attract ‘Undead’

**Reports of zombies, ghosts and similar “undead” in East End Historical District up 55% over first quarter of 2012, according to recent survey.**

“We believe this is due in part to the presence of tree sculptures scattered across the neighborhood, reports a spooksperson for the Center for Deceased Control in Atlanta, GA. “We’ve seen this in other cities with similar installations,” said Nancy Drew, Director of Paranormal Studies.

“At first, there was a strong correlation between the appearance of new sculptures and wandering artists with chain saws, but that

eventually died away.” Current theories here suggest that non-survivors of the 1900 Storm are upset over the attention paid to Hurricane Ike and are trying to keep memories of the earlier storm “alive.” Residents with tree sculptures are encouraged to dress them in funny hats or Mardi Gras beads to help reduce the problem.



### New EEHD Semi-Conductor ‘Fab’

**Micro-miniature semi-conductor fabrication facility (or ‘fab’) under construction in East End Historical District on Southwest corner of Sealy Avenue and 13th Street.**

Area residents curious about the site of the new facility have seen slow but steady progress now that construction permits have been issued. The extensive foundation is in place and high-tech processing equipment is expected to be delivered over the next few months. According to the COG Landmark Commission, no special use permit was required because the final building will be indistinguishable from any of the other historic properties in the East End.

Expected to bring less than 400 new jobs to the area, the new facility will include state-of-the-art fabrication tools necessary to produce the 0.000000001 micron memory chips required for the new iLID water closet appliance.

# President's Column



## Dave Fortenberry, President EEHDA

### Proposed Changes to July Meeting and August Newsletter

This year the July EEHDA Board meeting falls on July 4th which is not an ideal day for having a meeting. In fact, throughout July the potential for activities requiring Board action is low; so at our April meeting I will ask the Board to consider cancelling the July 2013 regularly scheduled meeting as well as skipping publication of a newsletter for the month of August. Taken together, these proposed actions will help our members make plans for the summer.

Of course if something should come up during this time frame which necessitates urgent Board action, a special meeting can be scheduled.

### Trust Fund Trustee Position Updates

Trustee positions for the EEHDA Trust Fund need to be updated in accordance with the charter, which calls for the then-current EEHDA President to serve along with two additional Trustees, one of which cannot be a Board member. (Please see Mike Gilbert's article on the history of the East End Trust on the next page.)

As your new president, I will replace the outgoing president for one of the Trustee positions, and we have a second Trustee in place who is a Board member. However the third, non-Board member position, is currently unfilled. Jim Cantrell is soliciting the names of members who are interested in the position and will present a list to the members for a vote at the April meeting. Since the third position is elected by the membership, we must have a quorum of members at the April meeting. Please make plans to attend on April 4th at 6 p.m.

### Block Parties and Social Activities

The Block Party Committee has been working diligently to identify a series of events for 2013. At this point we are planning to have the block party scheduled for April 11<sup>th</sup>. One new activity you may find coming soon is a return of the Chili Cook-off. In addition, preliminary work has been done to determine the feasibility of printing T-shirts, polo shirts and caps for our members to purchase.

### Upcoming Speakers

We are in discussions with Michael Culpepper, Chairman of the Landmark Commission, and hope he will attend our April meeting for comments and a brief Q & A session.

Kind regards,

Dave

**Kwik Kar.**  
On Broadway

**Kwik Kar.**  
Lube & Tune

Larry Stanley  
Owner

**Kwik Kar.**  
Lube & Tune

3115 Broadway • Galveston, TX 77550  
409-763-1533 Fax 409-763-2277



The  
House  
Company

**DAVID BOWERS**  
Realtor



2615 Broadway  
Galveston, Texas 77550  
E-Mail: david@davidbowers.com  
Cell Phone: 409-763-2800

## East End Trust Fund

### Mike Gilbert

**Martin Yeager, EEHDA President, 1990, challenged our association to raise \$25,000. The money raised was to be placed in a designated fund to help maintain, at that time, two properties: The Cottage and Alderdyce Park.**

Darragh Park was acquired from the Galveston Historical Foundation in 1995 for the purpose of retaining/preserving the ornate Darragh Fence (that is another story, for another time) and to establish a beautiful park/gardens for our neighborhood and city.

To attain that goal, the Board of Directors approved that from each fund-raiser at least ten percent or more would go towards the fund. Also, once the goal was reached only the interest from the \$25,000 would be used. The \$25,000 was to remain constant.

In January, 2008, the new Board of Directors voted to establish a trust fund to safeguard and honor the intent of the 1990 Board. Chris Keller, former attorney and active member of the East End, volunteered her time, with the help of other attorneys from her firm, to help write the document.

On March 6, 2008, the "East End Trust" was approved by the Board of Directors. As stated in the document: "The Trustees may authorize expenditures from the East End Trust to maintain the real properties owned by Grantor (EEHDA), including such expenses as landscaping, painting, repairs and maintenance of a Grantor structure. Such expense payments shall be made only from the income earned from the Corpus and at no time will any of the original Corpus or any amounts accepted as additional Corpus be spent."

The challenge was given, the challenge met and because of the hard work and effort by our past membership, volunteers and the vision of Martin and the 1990 and 2008 Board of Directors, we have an outstanding Trust to help maintain our now and possibly future properties.

Please support the advertisers who help bring you the EEHDA Neighborhood News.

## Sealy Apartments

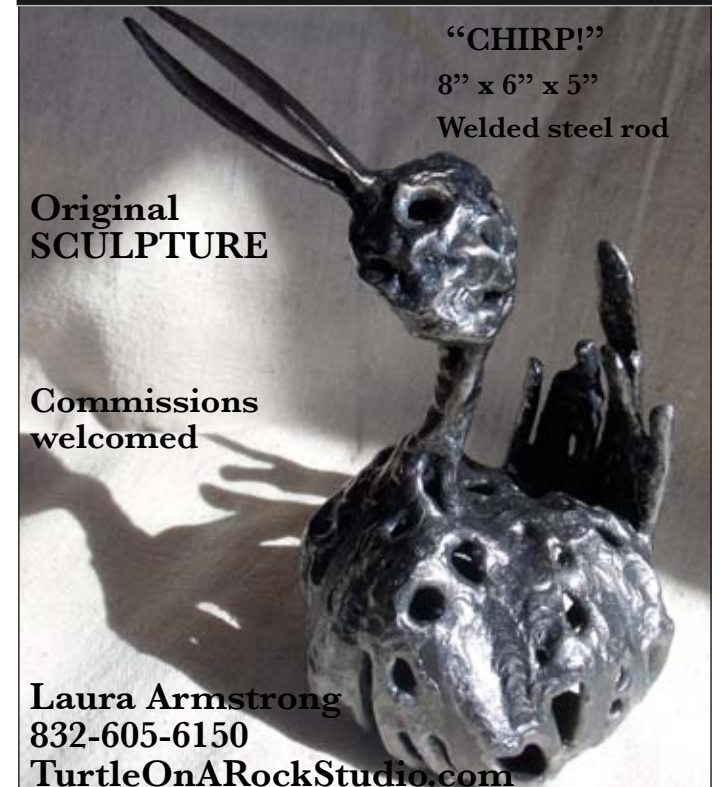
### Beth DeKeyser

#### Landmark Commission decision impact on the East End

Apartments at Sealy and 17th, unrepaired since Hurricane Ike, were to be torn down until a court case ruled against city's right to demolish standing structures that are in need of repair.

At the March 18<sup>th</sup> Landmark Commission meeting, the owners requested a variance for parking, property easement and materials to change the exterior design. The Commission decided the exterior of the primary building has historical merit and the edifice must be restored to the original Art Deco design. Eight covered parking places will be supplied, to be supplemented by street parking. The Commission also ruled that the adjacent four unit cinder block building could be changed based on the submitted plans; however, it ruled there would need to be four off street parking places. It appears the lot lacks sufficient space to supply these off street parking places.

### TurtleOnARockStudio.com



**"CHIRP!"**  
8" x 6" x 5"  
Welded steel rod

**Original  
SCULPTURE**

**Commissions  
welcomed**

**Laura Armstrong  
832-605-6150  
TurtleOnARockStudio.com**



Next Block Party is Thursday, April 11<sup>th</sup>  
5:30 p.m. until Sundown at The Cottage, 1501 Postoffice Street



**PAINTING**  
by Jorge  
(I ♥ my job!)

Jorge Gallegos

English (409) 771-4321  
Spanish (409) 392-9863

We need your email address!  
Please send to Secretary@EastEndHistoricalDistrict.org  
so you don't miss any invitations or timely reminders



*Building Galveston Lifestyles*

**CHUCK**  
**Morris**  
COASTAL HOMES

Chuck Morris  
281-808-9627  
cmorris@chuckmorrishomes.com  
www.chuckmorrishomes.com

**Award winning Design, Construction  
and Historic Restoration Since 1985**

## GAIN News

### Jonathon Tromm

**The GAIN monthly Board meeting took place on February 21st. The new Planning Director, Rick Vasquez, was guest speaker. He informed us that completion of the Land Development Regulations (LDRs) will likely be delayed 6 to 18 months.**

Vasquez said the LDRs are approximately 50% completed, but money to pay the consultants has been used up. Per Vasquez, not enough money was allocated in the original grant. Either more funds have to be found or the city staff will have to complete the process.

GAIN is having its website reworked extensively so that it will have features allowing each neighborhood to have a page. This will be presented in a live demonstration at the March 21st meeting.

City of Galveston Council Member Tarlton will be the guest speaker at the March meeting to discuss infrastructure issues in Galveston.

The monthly GAIN meetings are held the 3<sup>rd</sup> Thursdays of the month at 5:30 p.m. at the Moody Mansion, 2618 Broadway.



 **Merrill Lynch**

**Baker Brassieur & Associates** Global Wealth Management

**Marcia Brassieur, CFM, CRPC** 306 22nd St.  
Financial Advisor Galveston, Texas 77550  
409 766 2718 Marcia  
877 766 2718 Toll Free

**Jennifer Travis, CFM** 409 766 2722 Jenny  
Registered Client Associate FAX 409 877 4307  
marcia\_brassieur@ml.com  
jennifer\_travis@ml.com

## Park Grounds Update

### Mike Box

**The Grounds Committee is implementing our new strategy of having all of our work done by a single vendor, and we expect to see considerable cost benefit from doing it this way.**

The bid was won by Jose Dominquez' Amigo Lawn Service, which has done our mowing in past years. Jose has already completed the cutting back and mulching at Darragh and Alderdyce Parks, and will begin regular mowing, edging, and trimming of the grounds at Darragh Park, Alderdyce Park, and The Cottage when the grass and plants begin to grow.

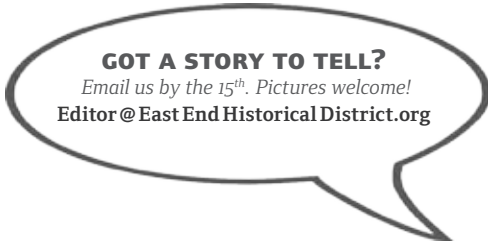
The beds at The Cottage will continue to be maintained by Sandy Hardin. (Thanks Sandy, and sorry about stacking the clippings from Darragh Park outside the back yard gate of The Cottage!)

Jonathon Tromm has resigned from the Grounds Committee due to his (very) busy schedule, but Bill Beveridge and I have been joined by Mike Gilbert. We hope everyone is pleased with the condition of our parks this year, but if you see a concern please let me know (mikebox49@gmail.com) and we'll take care of it.



 **Mosquito  
cafe**

628 14th Street  
Galveston, Texas 77550  
409.763.1010 (café)  
409.763.5251 (fax)  
www.mosquitocafe.com



Galveston

East End Historical District Association  
**NEIGHBORHOOD NEWS**

# LETTERS TO THE EDITOR (SERIOUSLY!)

## Hats off to East End Theatre Company

Dear East End,

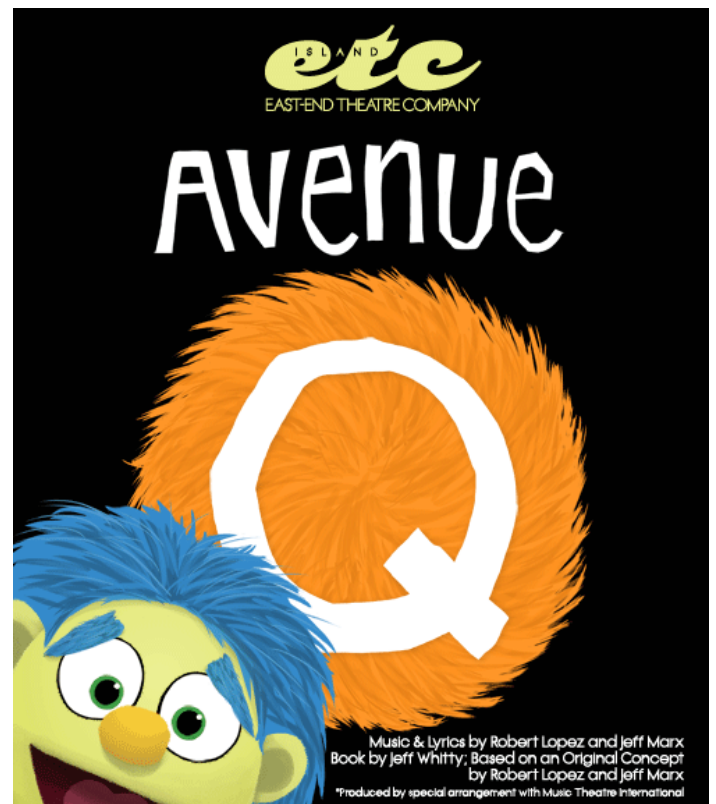
While visiting my sister in the beautiful Historic East End of Galveston, I recently had the pleasure of seeing East End Theatre Company's production of Tennessee Williams' **Cat on a Hot Tin Roof**. As former marketing director of the Alley Theatre in Houston, I realize the demands of this production and was very impressed. The acting was superb. Strickland, Wright and Low seemed effortlessly transformed into the complex characters Williams created in Brick, Maggie and Big Daddy.

The set design was brilliant for the small space and the simplicity of it allowed for a versatile use of indoor and outdoor areas. Mytelka's direction flowed beautifully. My only criticism of the production was how rushed the bows were at the close of the play. After more than two hours of engaging the audience in the emotionally-wrought lives of the characters, the company barely bowed, the lights came up quickly and the actors rushed off the stage. I am sorry that we, the audience, didn't have a moment to stand and show our gratitude.

I hope the locals and visitors alike recognize what a gem of a theatre and company Galveston has and how critical it is for us to support the performing arts. I have read this play and seen various productions dozens of times and I always take away something new. I applaud the East End Theatre Company and the entire cast and crew for an exceptional performance of a Tennessee Williams play. I look forward to attending many more East End Theatre Company productions.

Best Wishes,

Francesca Madden  
Newport Marketing Associates  
San Francisco, CA



Visit [www.islandetc.org](http://www.islandetc.org) to learn more about ETC's production of **Avenue Q** on April 4, 5, and 6.

# Know Your Neighbors

## Anne Hecht meets author Jami Durham

### An interview with Galveston history author Jami Durham

On the evening of February 7th, Jami Durham of the 700 block of 17th St. returned home brimming with excitement. One hundred people had shown up at the 1887 Bishop's Palace Champagne Reception for the signing of her new book **Galveston: Playground of the Southwest**, co-authored with W. Dwayne Jones, Executive Director of Galveston Historical Foundation. This is the fifth book in a series.

Jami works in GHF's Preservation Services where she is responsible for Historic Property Research; she has been there fifteen years.

Pre-Ike Jami lived on Church St. and was a member of EEHDA, but, like so many, lost so much.

### How long did it take you to write the book Jami?

It took us nine months to research the subject matter and collect the images, and three months to write and compile. We went all over the country.

### Must have been a lot of work!

(Jami's eyes are shining!) Oh, but it was so much fun! I got to meet so many people all over the country while doing the research. It was a wonderful and fulfilling experience to collaborate with Dwayne. It's a tour of Galveston's past. We visited eleven different libraries besides GHF's, including UT, Austin; SMU, Dallas, and the Chicago History Museum.

It was so amusing and gave us such a sense of pride to think that Chicago had amassed images of Galveston in its heyday.

Can you imagine! Chicago!

It was also very rewarding talking to people in Galveston who had lived in those times, and hearing their recollections. The original Pleasure Pier was constructed in 1912. We found the family of the man who managed the pier and they gave us photographs never seen before. This original pier was destroyed by Carla in 1961.

### Whet our appetites and tell us about a fun chapter.

In the 1880s Galveston became a destination for tourists. The Bathing Beauty Review took place from 1916 to the 1930s.

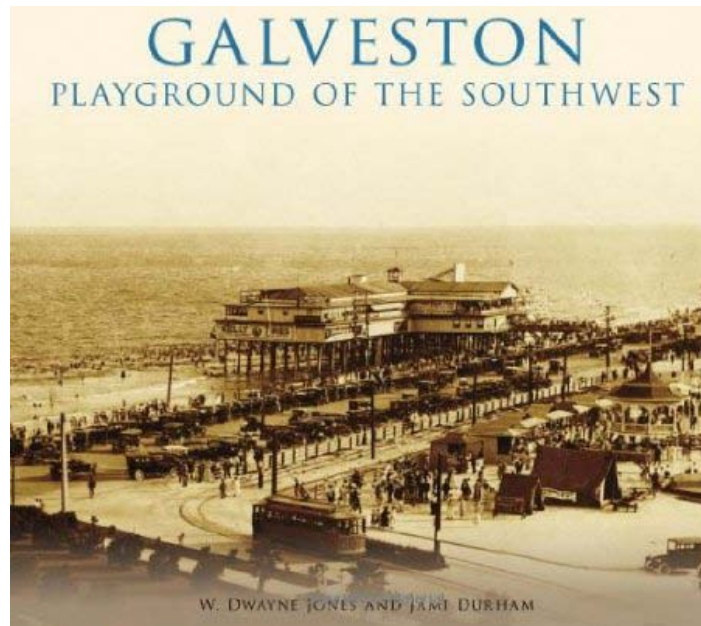
Crowds gathered in the hundreds of thousands to see these 'beauties', arriving by train and in the 'new' automobile. The modern Ms. Universe began in Galveston with these bathing beauty contests.

### One final question, Jami. What on earth brought you to Galveston?

I'm a Texan. Dad was Project Manager for George Mitchell Development Company. I remember the first time we visited what was to become The Woodlands. The only route through the piney woods was a dusty, dirt road. Think of it now. My parents still live there.

I grew up coming to Galveston as a child. We had a boat, ate seafood at Hill's on Pier 19. I

remember my brother asking my dad why we were going down this 'shady' street (the Strand). My dad replied that this street would someday again become the commercial center of Galveston. We opened the new Golden Corral and I'm still here!



To learn more about this book, visit [galvestonhistory.org](http://galvestonhistory.org) then click Shop, then Books, then the Arcadia Series.



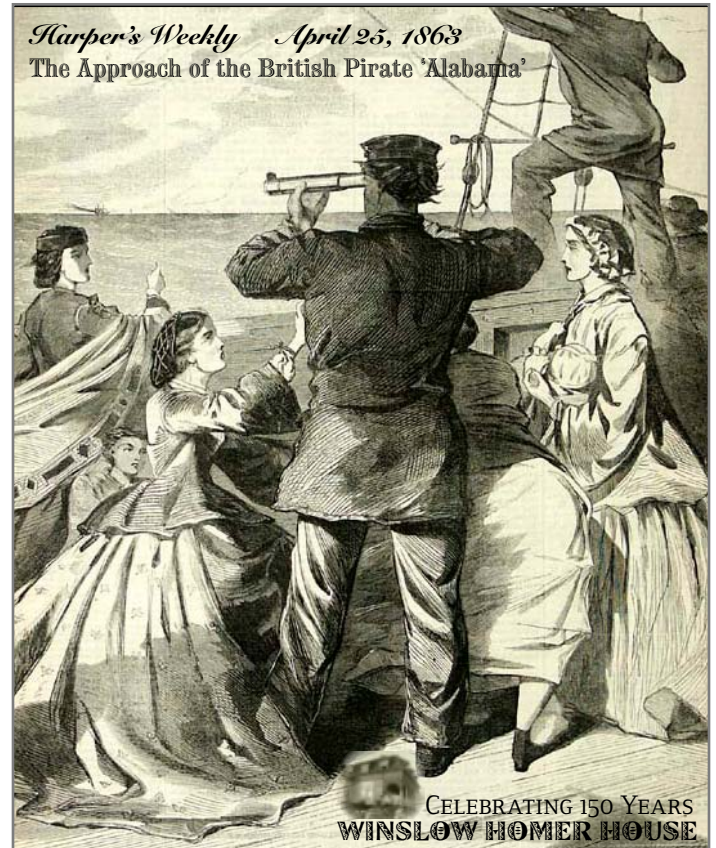
# Progress Reports

Larry Stanley

## Finance Committee to present the final proposed 2013 Budget for approval at the April 4<sup>th</sup> Board Meeting

The Finance Committee has met twice and will have met once more on March 26 to finalize our recommended budget, which will be presented to the Board at the April 4<sup>th</sup> meeting. Our goals were to develop a budget – which is mandated by the new By-Laws, put the budget in a new format that will be easier to understand and, when approved, will allow members to spend budgeted funds without going through the awkward process of Board approval for every expense.


The committee has been diligently and thoroughly assisted by Jeff Modzelewski and Floyd Pollock. We made some reductions and increases but for the most part used 2012 figures as a guideline. The presentation of the budget will allow time for questions and recommendations for changes before the budget is finalized.



**Windmill's  
Hair Salon & Gallery**


Jim Windmiller  
Hair Designer

1015 TWENTY SIXTH STREET  
Galveston Island, Texas 77550  
(409) 762-1627  
Email: jcwindmiller@aol.com



**Barney Rapp, Inc.**  
REALTORS®

RESIDENTIAL • COMMERCIAL



Visit our offices located in Galveston's  
famous East End Historical District  
at 1703 Broadway

409-763-6555  
Toll Free 1-888-768-RAPP

Your Historical Home Connection!

**La Petite  
MINI STORAGE**

**POLLY KENT**  
Manager  
Cell: 713-417-0681

Off.: 409-740-3101  
8501 Stewart Road  
Galveston, Texas 77554

**A**

**AVENTURA**  
RETIREMENT INCOME PARTNERS

An Independent Firm

Helping You Manage the Business of Life

David G. Hill, CFP®, ChFC® | Susan M. Dingle, CFP®, ChFC®

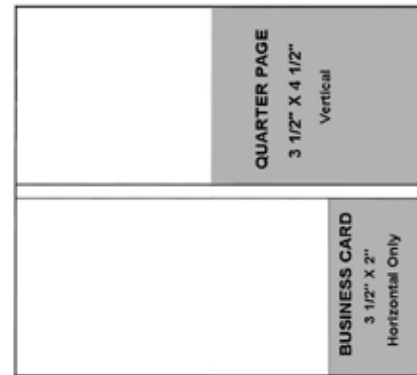
**AVENTURA PARTNERS LLC**  
4810 W. Panther Creek, Suite 102 // The Woodlands, TX 77381  
T 281.292.1340 // F 281.292.2388  
AventuraRetirementIncomePartners.com

Certified Financial Planner Board of Standards, Inc., owns the certification mark CFP in the U.S. Securities offered through Raymond James Financial Services, Inc., member FINRA/SIPC ©2012 Raymond James Financial Services, Inc., member FINRA/SIPC 11-BR0VC-0014 CW 1/12

East End Historical District Association's  
**NEIGHBORHOOD NEWS**  
 AD ORDER

Name: \_\_\_\_\_ Phone: \_\_\_\_\_  
 Address: \_\_\_\_\_  
 Name of Business: \_\_\_\_\_

Month(s) to appear \_\_\_\_\_



**RATES:**

*Business Card (1/8 page):*

**3 1/2" W X 2" h**  
 months @ \$ 20.00 / month  
 \_\_\_\_\_ \$215 (12x rate)

*Quarter page:*

**3 1/2" W X 4 1/2" h**  
 months @ \$ 30.00 / month  
 \_\_\_\_\_ \$325 (12x rate)

- Ads must be paid for in advance.
- Ad deadline is the 15<sup>th</sup> of the month.
- Political ads are limited to 1/4 page.

Ads must be submitted in PDF format.  
 Embedded imagery must be 300 d.p.i.

The EEHDA Newsletter reports news and events related to The East End Historical District Association, and is distributed monthly to approximately 300 members, libraries and civic organizations in Galveston.

Make check payable to: **East End Historical District Association**  
**PO Box 2424, Galveston, TX 77553**  
 Please email Ad Art to [advertising@eastendhistoricaldistrict.org](mailto:advertising@eastendhistoricaldistrict.org)  
**Consider becoming an EEHDA Sustaining Member for \$100 per year.**  
**Contact our Membership Chair at [membership@eastendhistoricaldistrict.org](mailto:membership@eastendhistoricaldistrict.org).**  
 I would be interested in donating to the EEHDA Casino Night Fundraiser

(Office use only: Amount paid: \_\_\_\_\_)

## Join the East End Historical District Association

Membership is open to everyone but only residents of the district are allowed to hold office or vote at meetings. Your membership supports a wide variety of services and programs dedicated to neighborhood improvement and historic preservation. Our Board of Directors holds regular neighborhood meetings at The Cottage, 1501 Postoffice Street at 6:00PM on the first Thursday of every month.

Meetings are open to all members and visitors to the district. The East End Historical District Association, Inc., is exempt from Federal Income Tax under section 501 (c) (3) of the Internal Revenue Code. Contributions to the EEHDA are deductible in the manner and to the extent provided by Section 170 of the IRS code. Rates are effective as of 10/1/2011.

Name: \_\_\_\_\_  
 Address: \_\_\_\_\_  
 City: \_\_\_\_\_ State: \_\_\_\_\_  
 Zip Code: \_\_\_\_\_ Phone: ( ) \_\_\_\_\_  
 Email: \_\_\_\_\_  
 Member(s) Names: \_\_\_\_\_

Select Membership Type (1 Year)

- \_\_\_ Individual \$15
- \_\_\_ Family \$20
- \_\_\_ Senior (65+) \$10
- \_\_\_ Senior Family \$15
- \_\_\_ Sustaining \$100
- \_\_\_ Life Member \$500
- \_\_\_ Benefactor \$1000



Please return this completed form with your payment to:  
 East End Historical District Association  
 P.O. Box 2424  
 Galveston, Texas 77553